



Sales team briefing

for Jouri Hills at Jumeirah Golf Estates

Jouri Hills at Jumeirah Golf Estates

Arada's first project in Dubai, Jouri Hills is part of the exclusive Jumeirah Golf Estates, a 40 million square foot world-class residential golf destination offering luxury homes and leisure facilities amidst two internationally-acclaimed championship golf courses, creating an unmatched lifestyle experience in the heart of new Dubai.





Life at Jouri Hills

Consisting of 294 contemporary homes ranging from three-bedroom townhouses to six-bedroom mansions, Jouri Hills also contains a wealth of facilities set in green landscaped parks.

Homes at Jouri Hills at Jumeirah Golf Estates all feature contemporary architecture designed to make the most of natural light, with floor-to-ceiling windows and double height spaces, as well as smart home solutions.

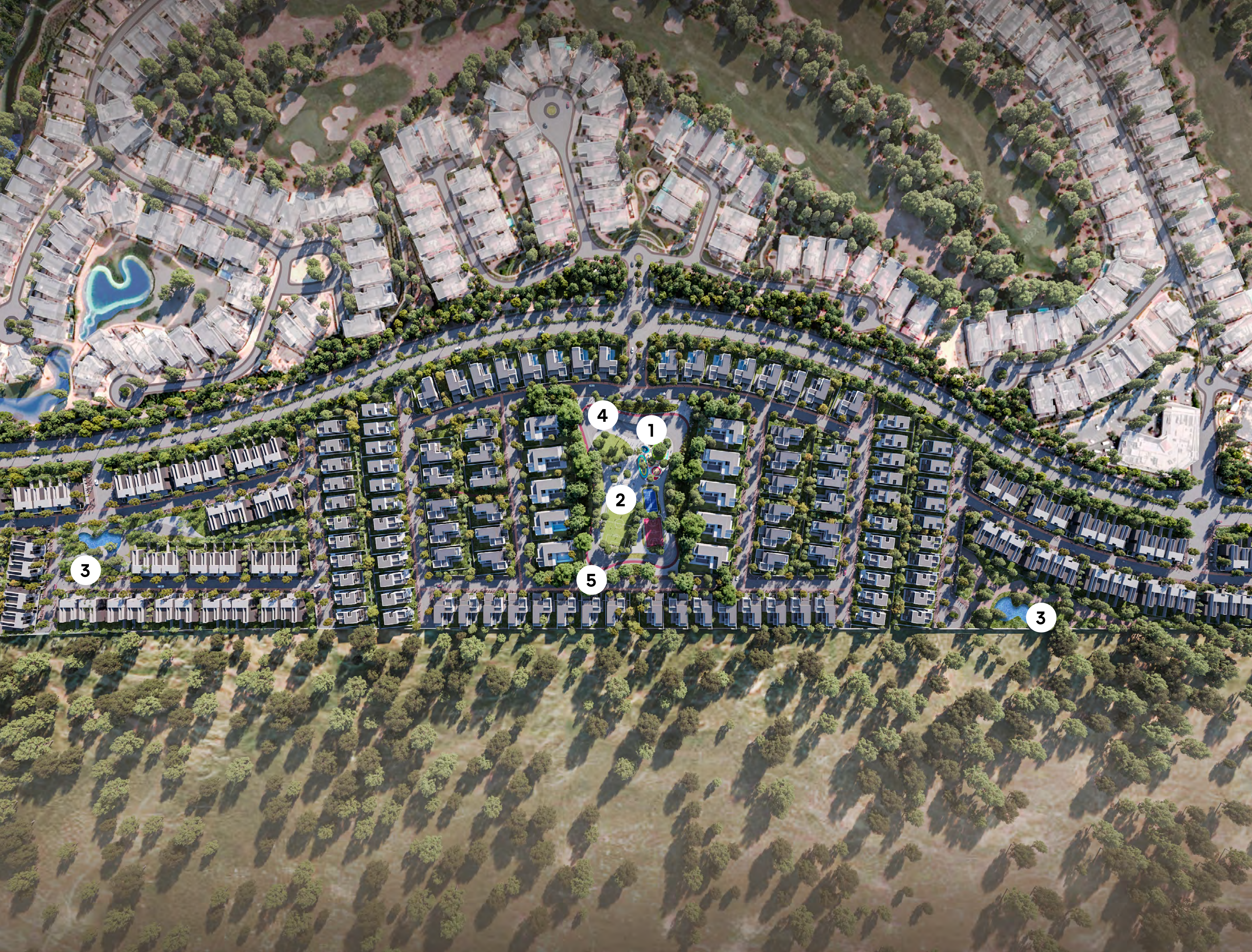
All signature villas come with swimming pools as standard, while the community's most luxurious homes contain over 14,000 square feet of space, spread across four floors and encompassing underground parking, basements with a flexible entertainment or fitness floor plans and a landscaped 'English courtyard' for outdoor entertainment.

The world's top golfing destination

Residents living in Jouri Hills can make the most of the world-class facilities available in the rest of Jumeirah Golf Estates.

- A 40 million square foot fully integrated master plan
- Two world-class golf courses, Earth and Fire
- Five-star Country Club with access to three swimming pools, a fitness center, a sauna and five restaurants boasting an impressive variety of flavours and cuisines
- Three padel tennis courts
- State-of-the-art European Tour Professional Institute (ETPI) golf academy and practice facilities
- Two shopping centers anchored by major supermarkets





Master Plan with facilities

1. Wellfit gym
2. Entertainment park
 - Skate park
 - Children's playground
 - Amphitheater
 - Football pitch
 - Basketball court
 - Padel tennis court
3. Two parks, which include a swimming pool and children's playground
4. Looped jogging track
5. Looped cycling track

Master Plan – by unit

- 3 Bedroom Jouri Hills Townhouses
- 4 Bedroom Jouri Hills Townhouses
- 5 Bedroom Jouri Hills Villas
- 5 Bedroom Jouri Hills Signature Villas 1
- 5 Bedroom Jouri Hills Signature Villas 2
- Six Bedroom Jouri Hills Mansion





Jouri Hills home features

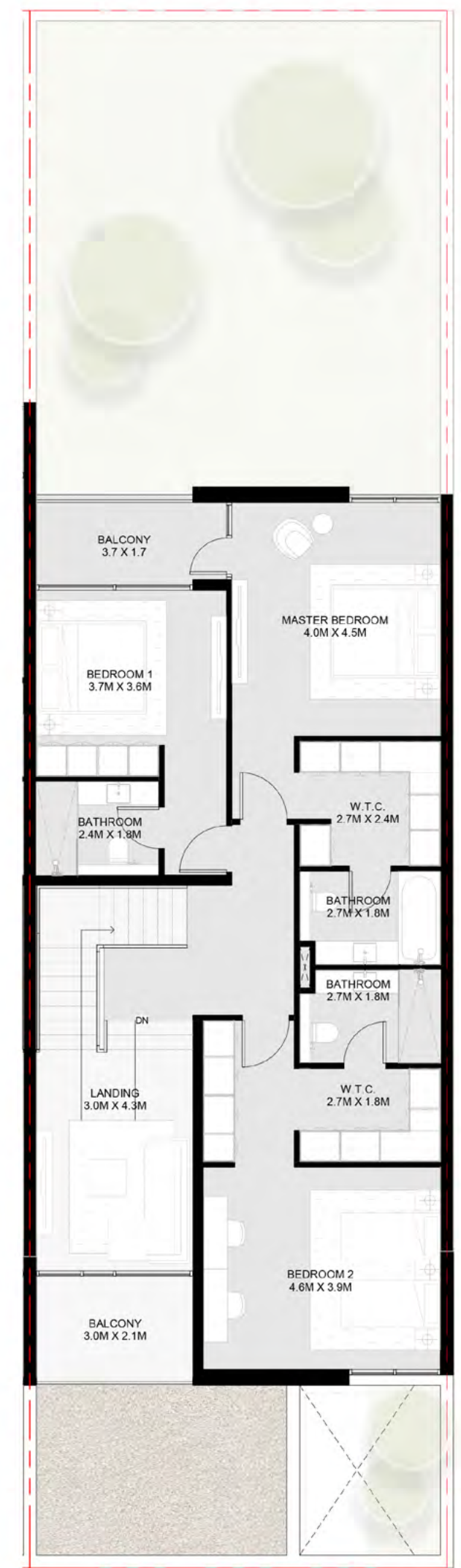
- Smart technology integrated into every home
- Contemporary design with nature-inspired touches
- Floor-to-ceiling wind
- Generous garden sizes with back and side yards
- Courtesy golf cart provided with every home purchased
- Large living spaces designed to facilitate entertainment and leisure
- Swimming pools as standard for detached homes
- All homes come with dishwasher, washing machine/dryer, oven and hood, microwave and fridge from a premium European manufacturer installed as standard.
- Direct access to greenery for every home
- Wide array of home sizes and floor plans
- Entertainment zone with sports facilities and two neighborhood parks
- Fully gated community with 24-hour security

3 Bedroom Jouji Hills Townhouse - A

Ground Floor: 1,685 sq. ft.
 First Floor: 1,475 sq. ft.
 Total: 3,160 sq. ft.



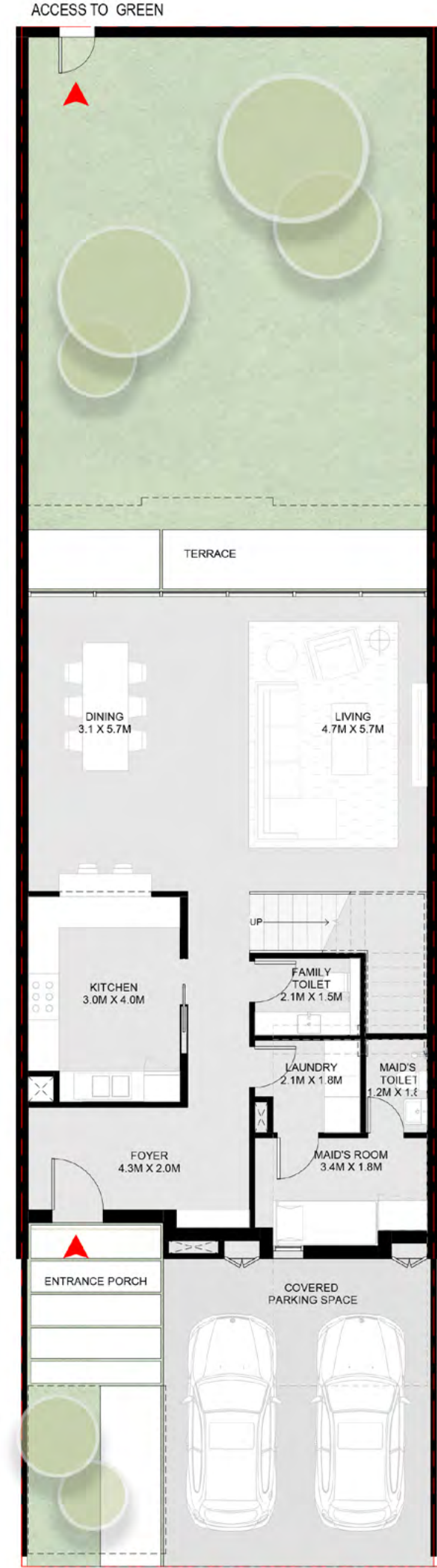
Ground Floor



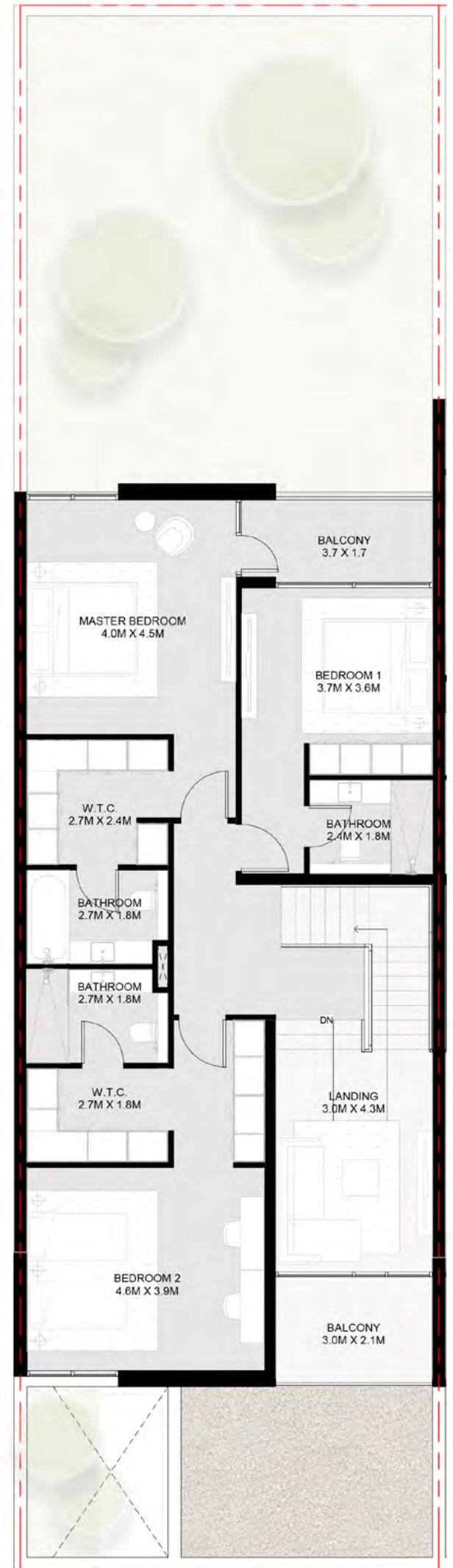
First Floor

3 Bedroom Jouri Hills Townhouse - B

Ground Floor: 1,685 sq. ft.
 First Floor: 1,475 sq. ft.
 Total: 3,160 sq. ft.



Ground Floor



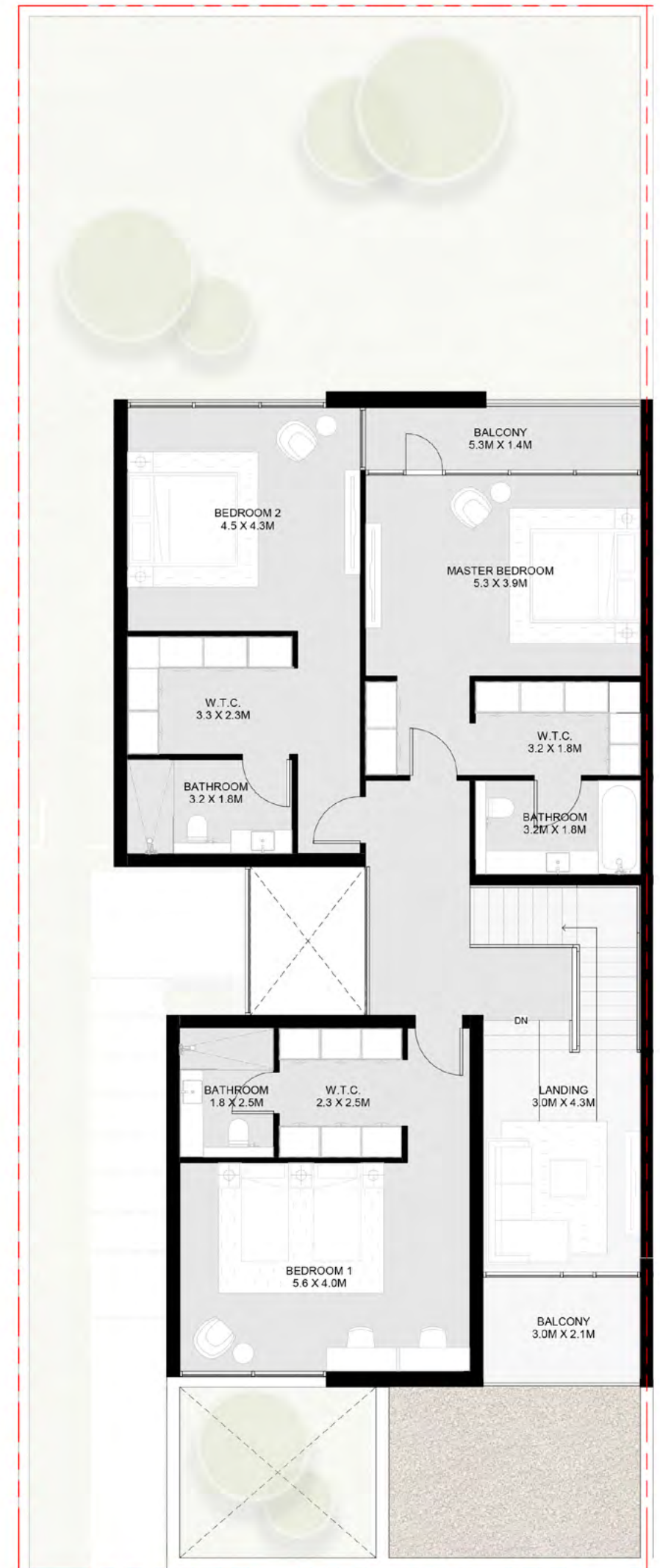
First Floor

4 Bedroom Jouri Hills Townhouse - A

Ground Floor: 2,147 sq. ft.
 First Floor: 1,850 sq. ft.
 Total: 3,997 sq. ft.



Ground Floor



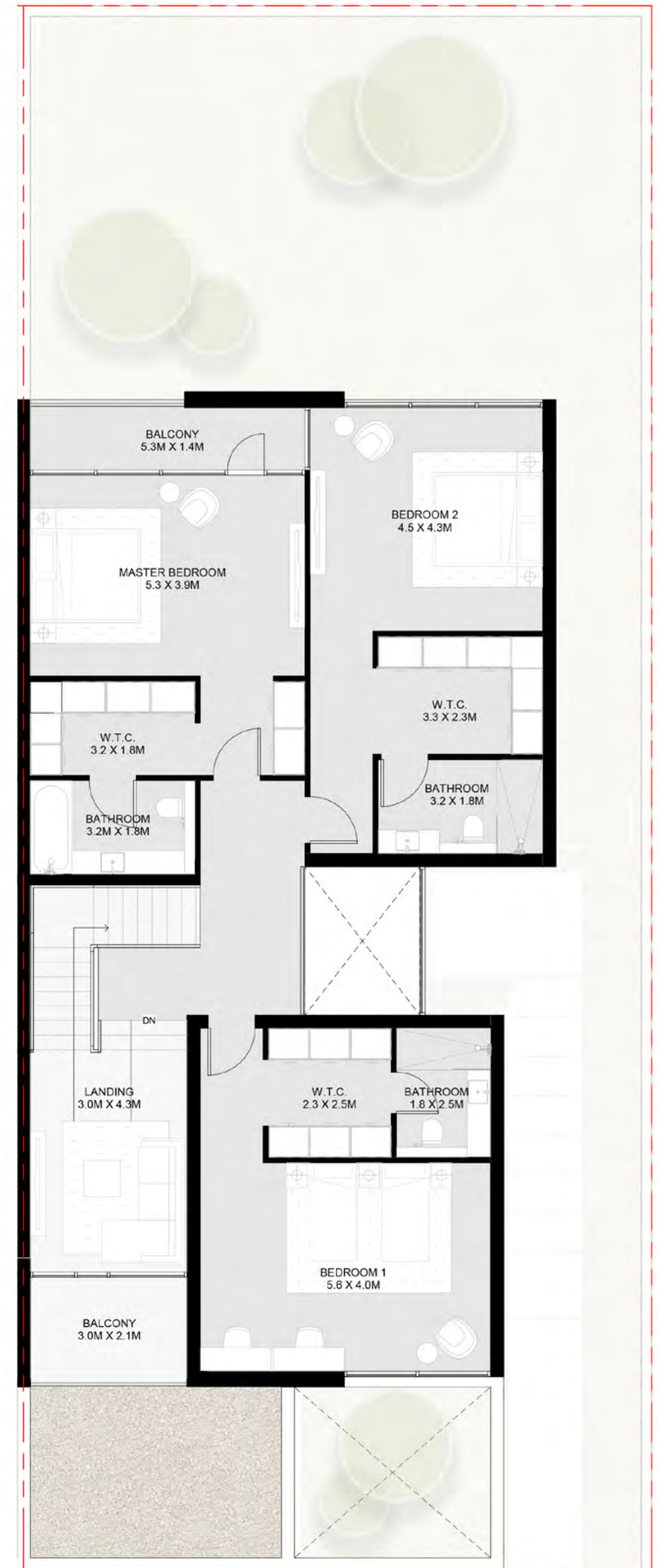
First Floor

4 Bedroom Jouri Hills Townhouse - B

Ground Floor: 2,147 sq. ft.
 First Floor: 1,850 sq. ft.
 Total: 3,997 sq. ft.



Ground Floor



First Floor

Five Bedroom Jougi Hills Villa A

Ground Floor: 2,309 sq. ft.
First Floor: 2,010 sq. ft.
Second Floor: 1,410 sq. ft.
Total: 5,729 sq. ft.





Ground Floor



First Floor



Second Floor

Five Bedroom Jouri Hills Villa B

Ground Floor: 2,309 sq. ft.
First Floor: 2,010 sq. ft.
Second Floor: 1,410 sq. ft.

Total: 5,729 sq. ft.





Ground Floor



First Floor



Second Floor

5 Bedroom Jouri Hills Signature Villa - 1 A

Ground Floor: 2,786 sq. ft.
First Floor: 2,419 sq. ft.
Second Floor: 1,282 sq. ft.

Total: 6,487 sq. ft.





Ground Floor



First Floor



Second Floor

5 Bedroom Jouri Hills Signature Villa - 1 B

Ground Floor: 2,786 sq. ft.
First Floor: 2,419 sq. ft.
Second Floor: 1,282 sq. ft.
Total: 6,487 sq. ft.





Ground Floor



First Floor



Second Floor

5 Bedroom Jouri Hills Signature Villa - 2 A

Basement : 1,587 sq. ft.
Ground floor: 2,785 sq. ft.
First floor: 2,419 sq. ft.
Second floor: 1,282 sq. ft.

Total: 8,073 sq. ft.





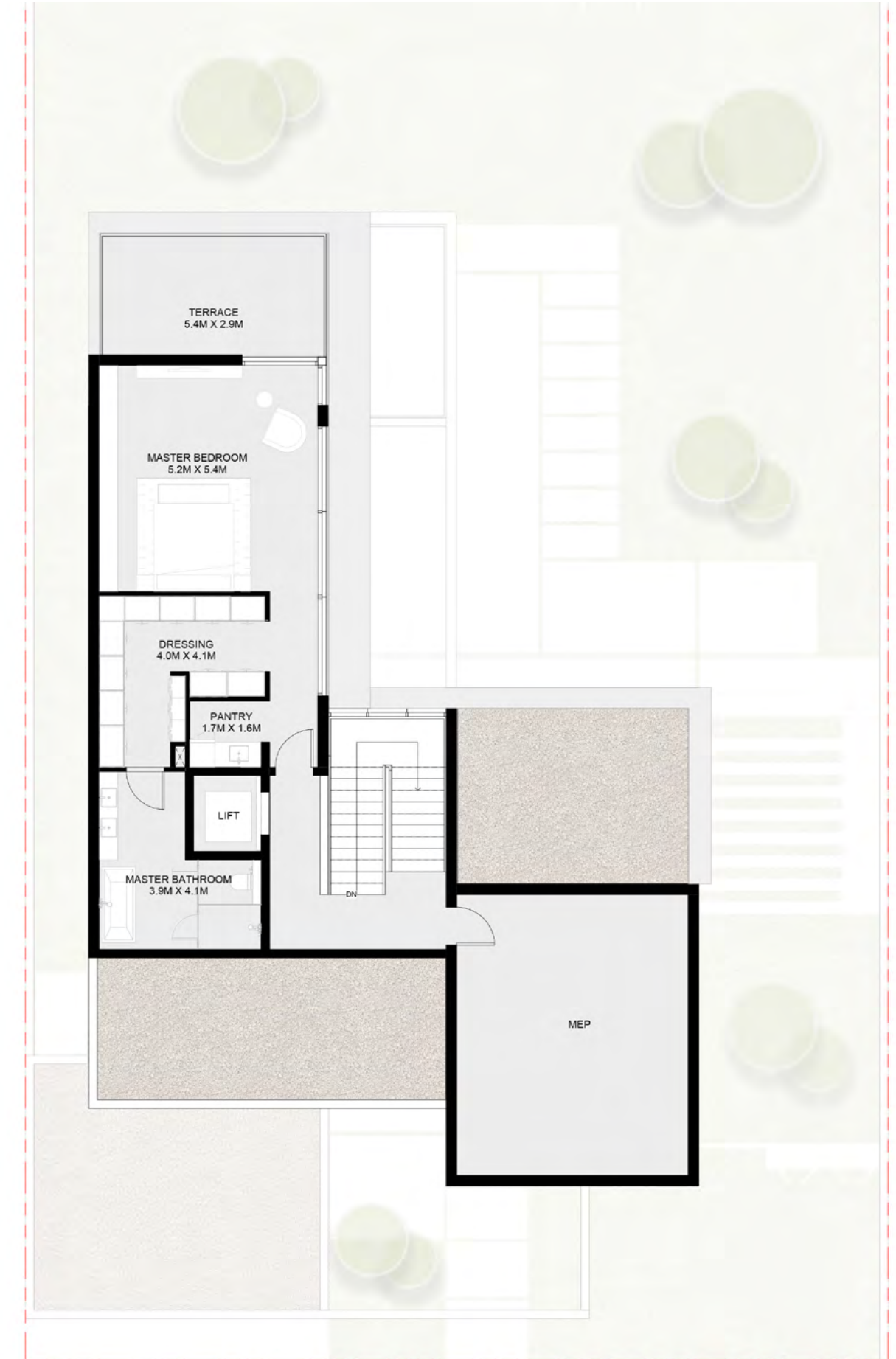
Basement Floor



Ground Floor



First Floor



Second Floor

5 Bedroom Jouri Hills Signature Villa - 2 B

Basement :	1,587 sq. ft.
Ground floor:	2,785 sq. ft.
First floor:	2,419 sq. ft.
Second floor:	1,282 sq. ft.
Total:	8,073 sq. ft.





Basement Floor



Ground Floor



First Floor



Second Floor

6 Bedroom Jouri Hills Mansion - A

Basement : 4,788 sq. ft.
Ground floor: 4,202 sq. ft.
First floor: 3,557 sq. ft.
Second floor: 2,542 sq. ft.

Total: 15,089 sq. ft.





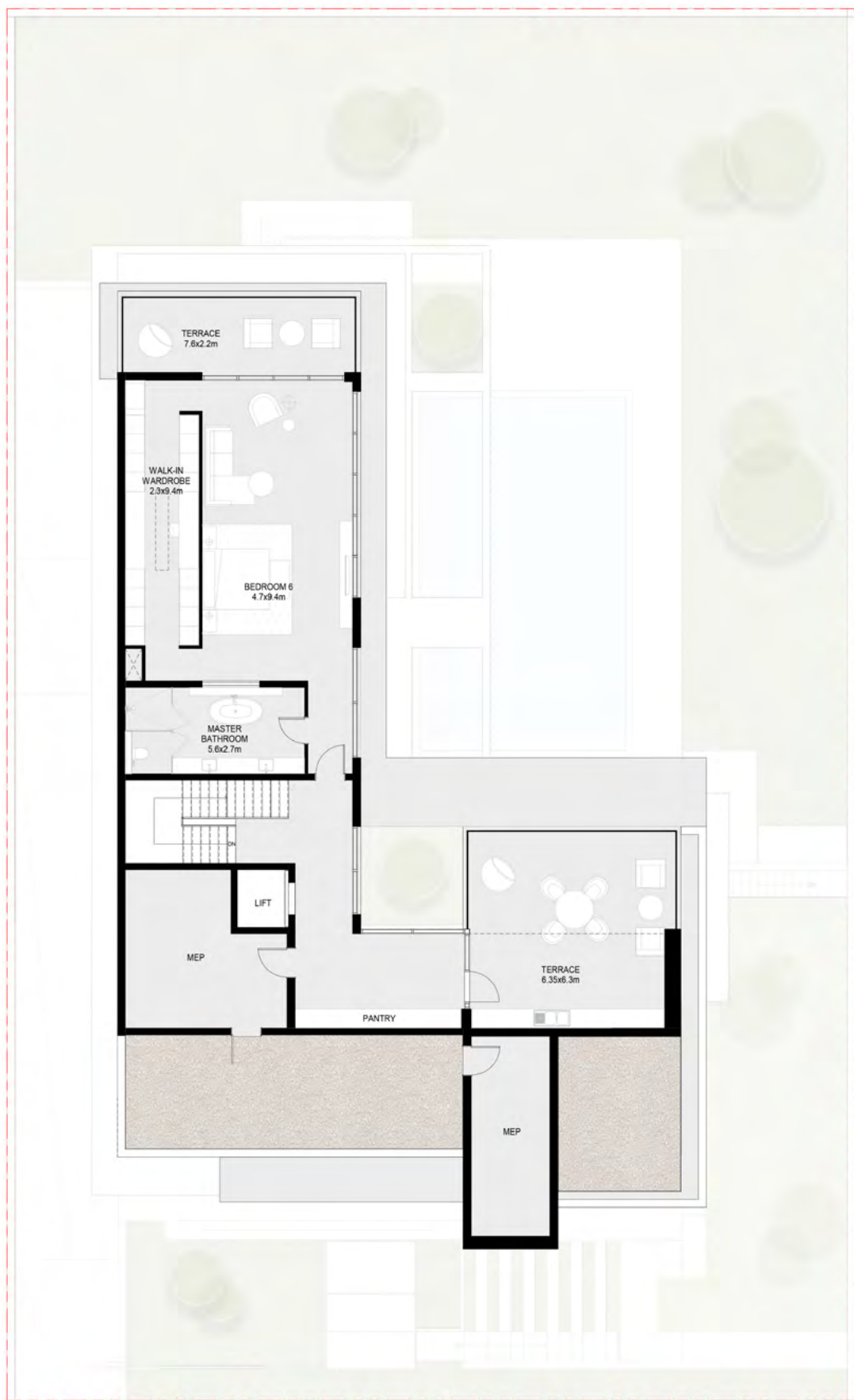
Basement Floor



Ground Floor



First Floor



Second Floor

6 Bedroom Jouri Hills Mansion - B

Basement : 4,788 sq. ft.
Ground floor: 4,202 sq. ft.
First floor: 3,557 sq. ft.
Second floor: 2,542 sq. ft.

Total: 15,089 sq. ft.





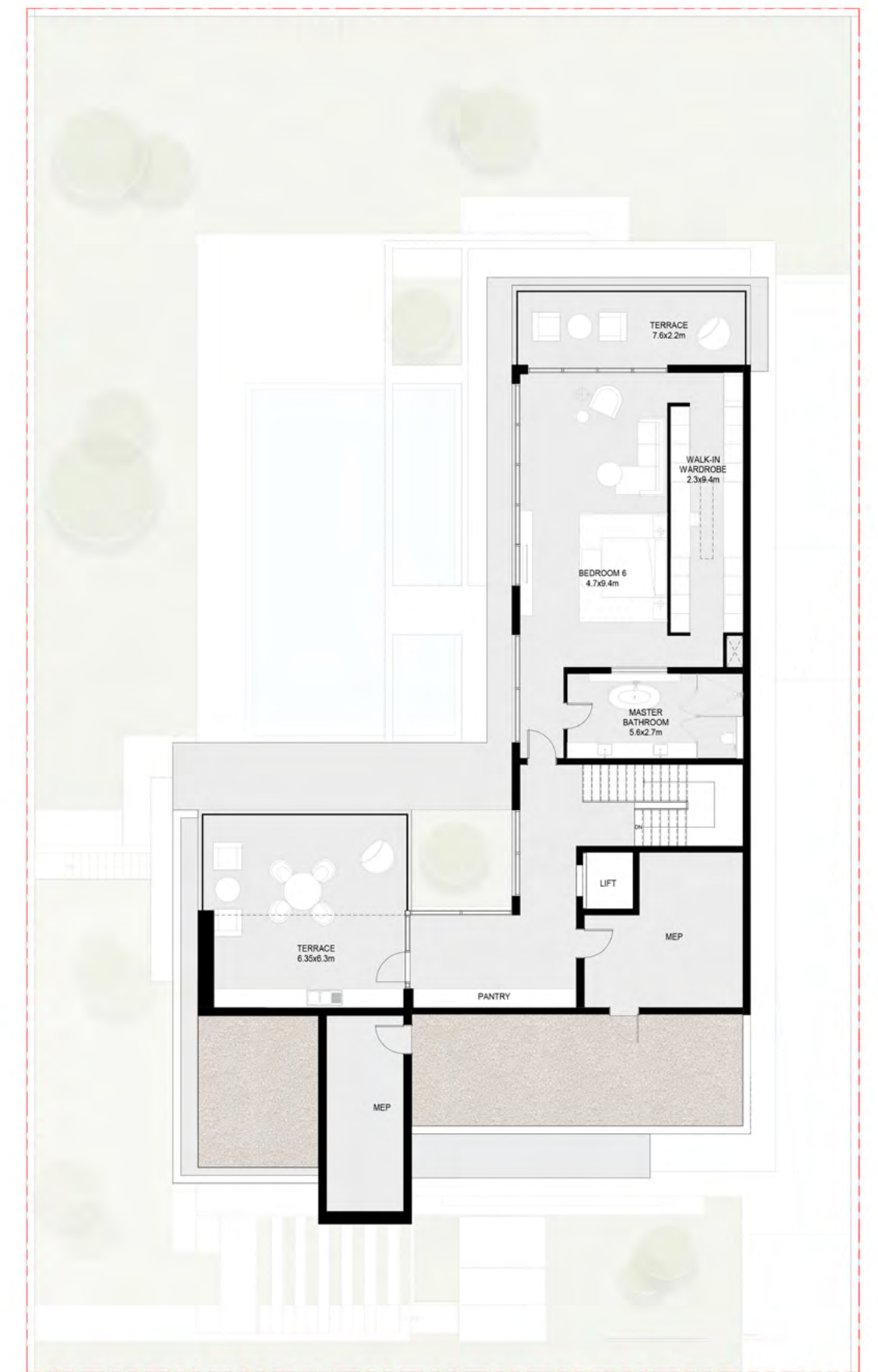
Basement Floor



Ground Floor



First Floor



Second Floor

